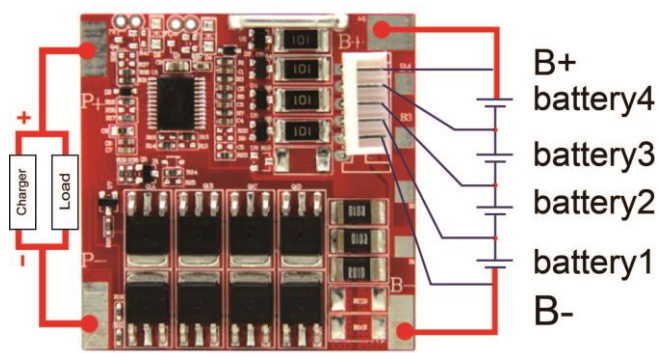


Protection Circuit Module

PCM / BMS / PCB For 16.8V 4S Li-ion/Li-Polymer Battery Packs
Data Sheet

Item	Contents	Criteria (Adjustable)
1	Model	SBHCX-D123
2	Voltage	Charging voltage 16.8V
3	Current	Maximal continuous charging current 15A
		Maximal continuous discharging current 15A
		Current consumption ≤50μA
4	Overcharge Protection	Over charge detection voltage 4.25V±0.025V
		Over charge detection delay time 0.5~2.0S
		Over charge release voltage 4.10V±0.05V
5	Over Discharge Protection	Over discharge detection voltage 2.80V±0.05V
		Over discharge detection delay time 50~200mS
		Over discharge release voltage 3.00V±0.1V
	Over current Protection	Over current detection current 40±5A
		Detection delay time 5~20mS
		Over charge detection current 20±3A
		Detection delay time 5~20mS
7	Short Circuit Protection	Release condition Cut load, automatically recover
		Detection condition Exterior shot circuit
		Detection delay time 200~500uS
8	Balance	Balance voltage for single cell 4.200V±0.025V
		Balance current for single cell 42mA ±10mA
9	Resistance	Inner resistance ≤20mΩ
10	Temperature	Operating temperature range -20 ~ +85°C
		Storage temperature range -20~ +125°C
11	Size (L*W*T)	L50mm * W50mm * T6mm

Remarks: The picture is for reference only, the specific samples shall prevail



Charge, Discharge at same Port
P+=B+/Charge+/Discharge+
P-=Charge-/Discharge-